



# MONTHLY MEMBERSHIP PROGRESS REPORT

District 325B1

Results as of: 08/31/2018

GMT: KHAGENDRA SITAULA

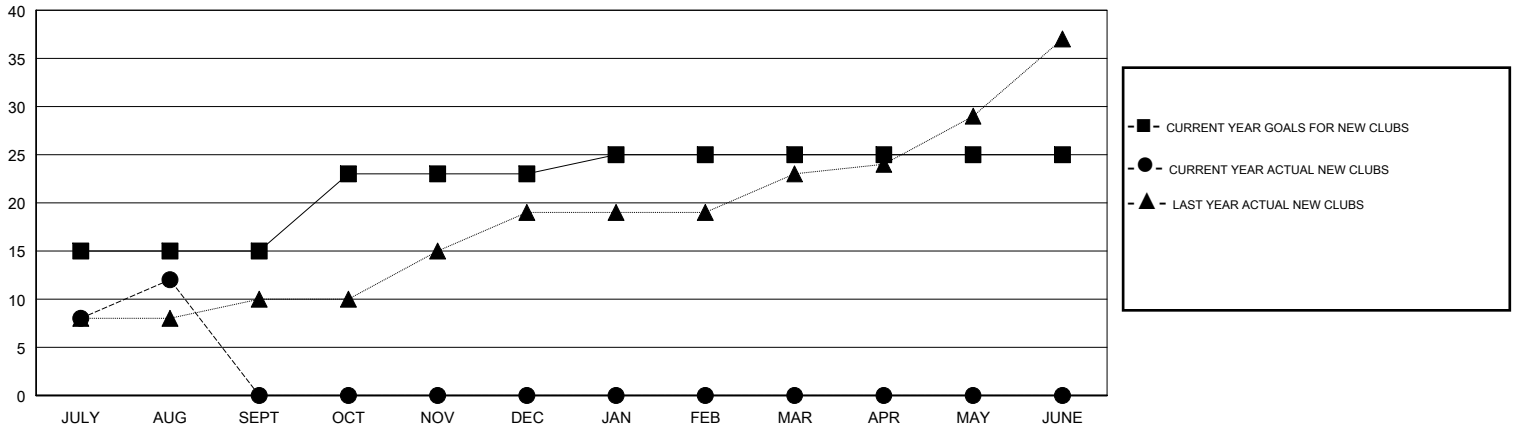
LOCATION NEPAL

GMT CA

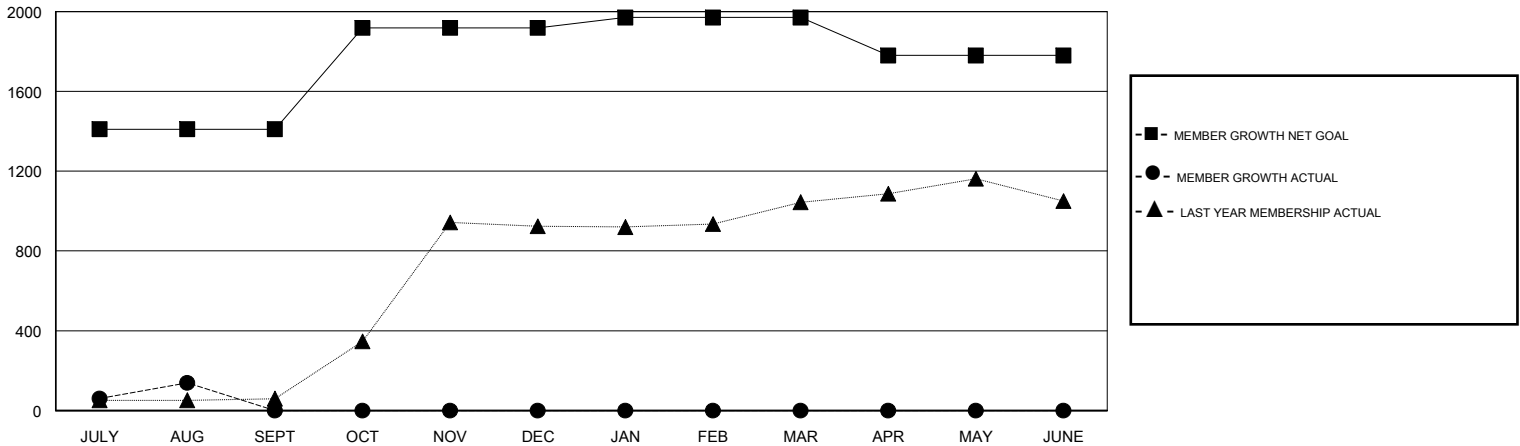
Clubs			
RESULTS FOR 2018-2019			
QUARTER	NEW CLUB GOAL	NEW CLUBS	DROPPED CLUBS
JULY/AUG/SEPT	15	12	0
OCT/NOV/DEC	8	0	0
JAN/FEB/MAR	2	0	0
APR/MAY/JUNE	0	0	0

Members			
RESULTS FOR 2018-2019			
QUARTER	MEMBER GROWTH NET GOAL	MEMBER GROWTH ACTUAL	DROPPED MEMBERS ACTUAL (including transfers)
JULY/AUG/SEPT	1,410	501	350
OCT/NOV/DEC	508	0	0
JAN/FEB/MAR	52	0	0
APR/MAY/JUNE	-190	0	0

GOALS AND ACTUAL NEW CLUBS CUMULATIVE



GOALS AND ACTUAL MEMBERS CUMULATIVE



DROPPED CLUBS: 0	76 CLUBS OF 349 ADDED 1 OR MORE NEW MEMBERS	<u>GENDER DISTRIBUTION</u>	
DROPPED MEMBERS		MALE	8,169 (76.03%)
DECEASED	1	FEMALE	2,575 (23.97%)
CLUB CANCELLED	0	Women Percentage Fiscal Year Goal: 20%	
OTHER	349	TOTAL FAMILY UNIT MEMBERS	
TOTAL	350	5,563	
<a href="#">CLICK HERE FOR CUMULATIVE MEMBERSHIP DATA</a>		FAMILY MEMBERS PAYING HALF DUES	
		3,506	